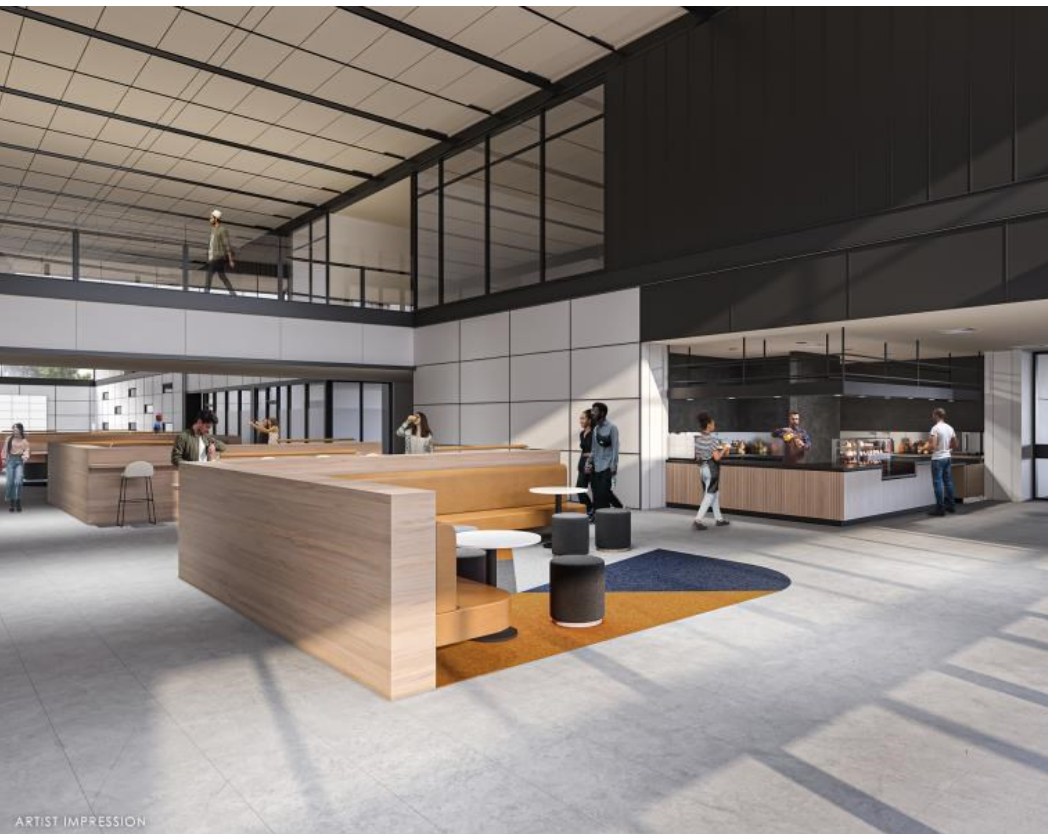


# FOR LEASE



## TAFE NSW - Kingswood, 12-44 O'Connell Street, KINGSWOOD 2747

### LOCATION

TAFE NSW Nepean - Kingswood is located in Sydney's western suburbs.

Located 2.5km from Kingswood Railway Station with access to the M4 and Great Wester Hwy.

Combining traditional resources with some of the best emerging technologies TAFE NSW has to offer, students have access to a rich educational environment that supports social outcomes, learning, teaching and research.

### DESCRIPTION

Located in the brand new IAT building at Kingswood TAFE.

This cafe is fully fitted out and ready to go.

Equipment includes:

- K02 REFRIGERATED COLD DISPLAY REFRIGERATED COLD DISPLAY
- K03 MILK JUGGLER
- K04 2 DOOR UNDERCOUNTER REFRIGERATOR
- K05 UNDERCOUNTER DISHWASHER
- K09 GAS RANGE/GRIDDLE OVEN
- K10 ELECT. CHIP SCUTTLE
- K11 GAS FRYER GAS FRYER
- K13 EXHAUST CANOPY
- K16 MICROWAVE OVEN MICROWAVE OVEN
- K17 1 DOOR UPRIGHT FREEZER 1 DOOR UPRIGHT FREEZER

### CONTACT

TAFE NSW tafenswlms@ciaustralia.com.au



View more opportunities at [ciaustralia.com.au](http://ciaustralia.com.au)

# FOR LEASE



K18 2 DOOR UPRIGHT REFRIGERATOR 2 DOOR UPRIGHT REFRIGERATOR

## FEATURES



Lvl/Suite  
IAT CAFE



Area  
30 m<sup>2</sup>



Rent  
/m<sup>2</sup> Gross



Outgoings  
To be advised



Term  
Five years



Available

## CONTACT

TAFE NSW [tafenswlms@ciaustralia.com.au](mailto:tafenswlms@ciaustralia.com.au)



View more opportunities at  
[ciaustralia.com.au](http://ciaustralia.com.au)