



## KIMBERLY CLARK HOUSE 52 Alfred Street, **MILSONS POINT**

### The Location

The property is strategically located within the heart of the lower north shore suburb of Milsons Point. The property offers magnificent Sydney Harbour and Lavender Bay views.

The surrounding area offers an abundance of restaurants, cafes and transport facilities (the property is opposite Milsons Point Train Station) and good proximity to Sydney CBD and North Sydney, making it a highly desirable commercial and residential location.


### The Building

To be advised

### The Offering

 **Lvl/Suite**  
Level 11

 **Rent**  
/m<sup>2</sup> Net


 **Term**  
Negotiable

 **Parking**  
Available

 **Grade**  
A

 **Comment**

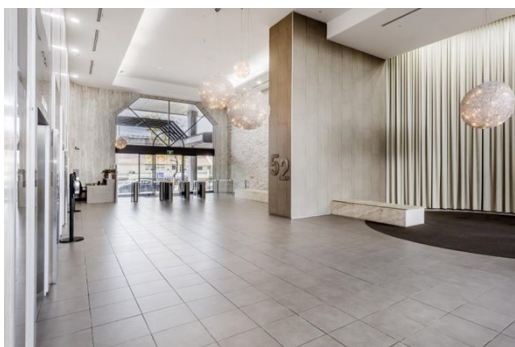
 **NLA**  
900 m<sup>2</sup>

 **Rent Review**  
To be advised

 **Outgoings**  
Estimated at \$137/m<sup>2</sup>

 **Available**  
Now

 **NABERS**  
N/A



NOTE: All rentals and outgoings are exclusive of GST

### Contact

**Toby Anderson**  
+61 409 906 580  
tanderson@ciaustralia.com.au

**Anthony Merrett**  
+61 405 719 566  
amerrett@ciaustralia.com.au